

Turntable TT 1.2 WF-O

Technical data:

Diameter	1.2 m
Load capability	300 kg
Point Load	50kg (at area of 10 cm x 10 cm)
Height	160 mm
Material cover plate	Laminated wood, waterproof
Rotating speed adjustable	0.1 rpm – 2.5 rpm
Positioning accuracy	+/- 0.5°
Rotating angle	-200° to 400°
Motor	Synchronous servo motor
Turntable drive	Toothed belt and worm gear
Elevation tolerance	< 3 mm
Voltage	110 VAC – 230 VAC; 50 Hz / 60 Hz; single phase
Current consumption	max. 16 A
Required RCD	300 mA
Control cable	Fiber optic lines
Remote control via	LAN (TCP/IP); (IEEE only with NCD)
Interference suppression	20 dB under limits DIN EN 55011:2022-05 class B
Temperature working range	-10°C to +35°C
Total weight	approx. 80 kg
Accessories	Service manual 3 m power supply cable

Brief description

The turntable **TT 1.2 WF-O** is especially designed for freestanding installation on surface floor at open area test sites (OATS).

The carrier plate is made of waterproof, laminated and lacquered wood.

A 285 mm diameter opening in the center of the turntable provides the capability to insert power supply for testing.

The **LAN (TCP/IP) - interface** provides an additional control option for all functions, when operated with the FCU^{3.0} or NCD Controller.

Sales Partner:



ABSOLUTE EMC LLC.
Covering sales in North America
United States, Mexico, & Canada

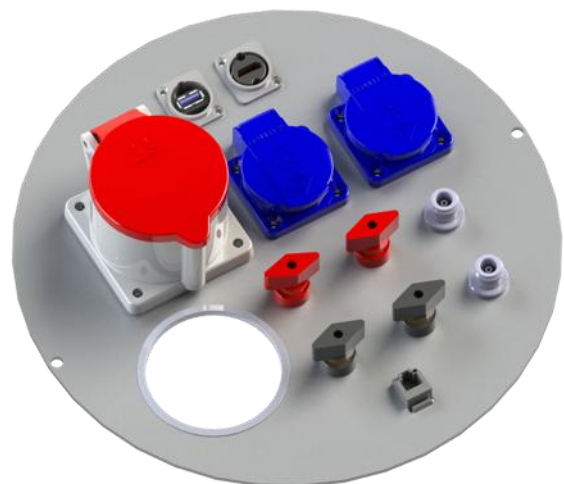
absolute-emc.com
Phone: 703-774-7505
info@absolute-emc.com

Phone: +49 (0)9606 923913-0
Fax: +49 (0)9606 923913-29

eMail: info@matur-gmbh.de
Web: www.matur-gmbh.de



Standard center plate



Example for a customized center plate

Sales Partner:



ABSOLUTE EMC LLC.
Covering sales in North America
United States, Mexico, & Canada

absolute-emc.com
Phone: 703-774-7505
info@absolute-emc.com

Information presented enclosed is subject to change as product enhancements are made regularly. Pictures included are for illustration purposes only and do not represent all possible configurations.

Phone: +49 (0)9606 923913-0
Fax: +49 (0)9606 923913-29

eMail: info@matur-gmbh.de
Web: www.matur-gmbh.de